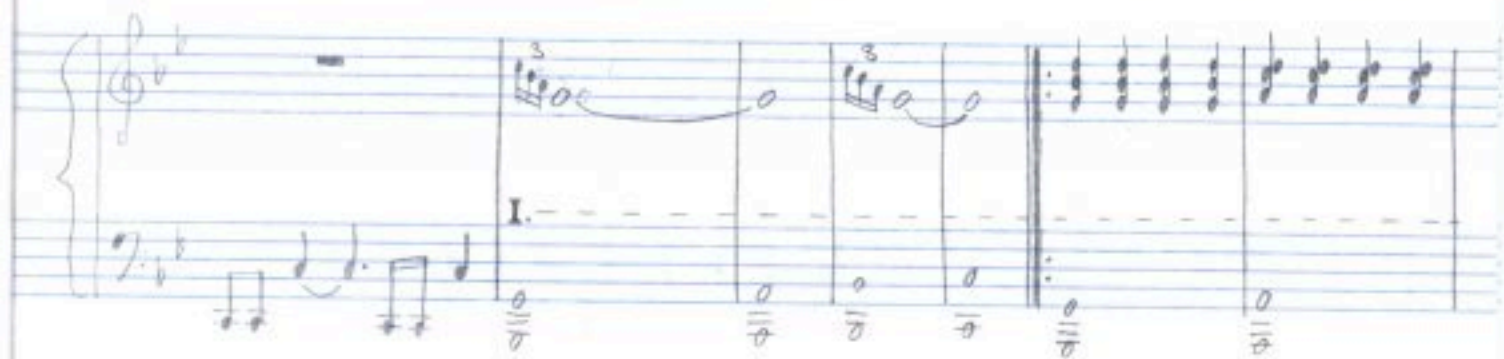


CLUBBED TO DEATH



Handwritten musical notation, first system. Treble and bass staves. Treble staff contains a melodic line with eighth and sixteenth notes, including a trill marked '8'. Bass staff contains a simple accompaniment with whole and half notes.

Handwritten musical notation, second system. Treble and bass staves. Treble staff continues the melodic line with eighth and sixteenth notes, including a trill marked '8-1'. Bass staff contains a simple accompaniment with whole and half notes.

Handwritten musical notation, third system. Treble and bass staves. Treble staff continues the melodic line with eighth and sixteenth notes. Bass staff contains a simple accompaniment with whole and half notes.

Handwritten musical notation, fourth system. Treble and bass staves. Treble staff contains a melodic line with eighth and sixteenth notes, including a trill marked '8'. Bass staff contains a simple accompaniment with whole and half notes. A double bar line is present, followed by a second ending marked 'II.'.

Handwritten musical notation, fifth system. Treble and bass staves. Treble staff contains a melodic line with eighth and sixteenth notes. Bass staff contains a simple accompaniment with whole and half notes. A double bar line is present, followed by a second ending marked 'II.'.





This sheet music is just the base of what I have converted to the piano from the monumental and popular track of Rob Dougan.

Notice that there are several special notes which I will explain right away:

- Sign **I**: you will have to play the left hand just like in the previous four bars and continue playing till the end of the broken line.
- Sign **II**: you will have to play the left hand just like under sign **I**, and continue playing till the end of the broken line.

For the rest of the music, use your own imagination, put your heart and spirit in it... and enjoy the masterpiece.

Best wishes: ObsidianLord